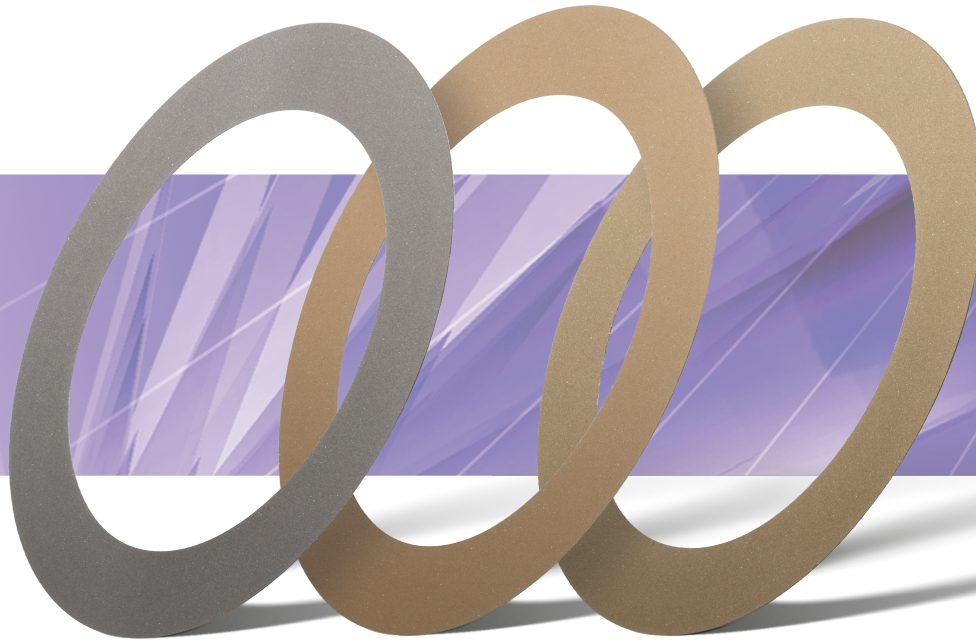
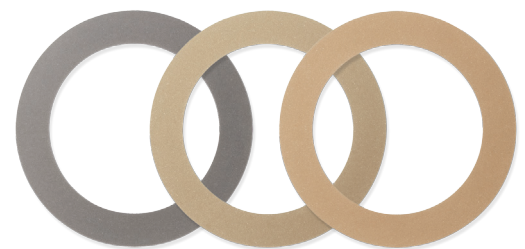


PRECISION ACCRETECH BLADE  
METAL BOND BLADES  
**HM series**

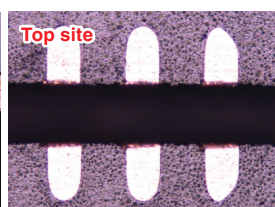
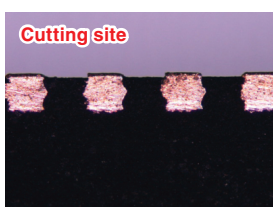


**Realized the cutting of QFN package with metal blade.  
The standard bond series represented by a high quality  
cutting ability, performance stability, and high sintering  
technology.**

- High sintering technologies bring out the properties to correspond to the various applications.
- Unique manufacturing processes provide uniform distribution of grit, and performance stability.
- Improved high cutting quality and wear resistance by adapting special grit.
- Accumulated plenty of successful cases of QFN cuttings.



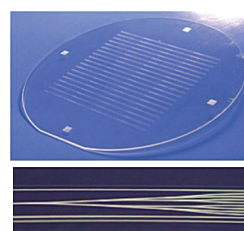
■ Dicing Application      Metal blade (HM series)



Cutting by HM046

■ QFN package cutting

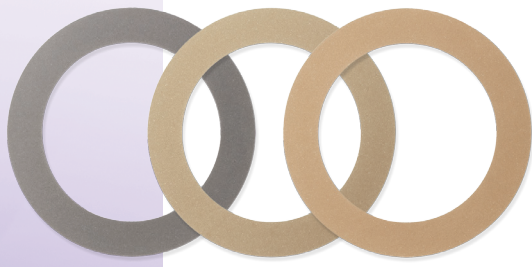
Resin blade is generally used in QFN cutting field, however it can be cut by metal blade as well. Metal blade is expected to be a long life blade to cut QFN.



■ PLC cutting (silica glass)

HM series is highly evaluated and occupied big blade market in this field because of its good cutting performance.





## ■ Specification and Notation

<b>MD</b>	<b>400</b>	-	<b>75</b>	<b>HM030</b>
Grit type	Mesh size		Concentration	Bond

## ■ Grit type

MD	Standard
XD	Coating

## ■ Concentration

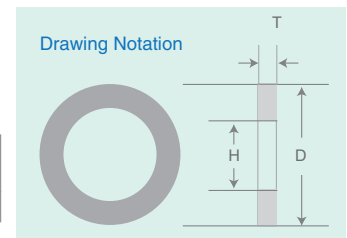
25, 50, 75, 100

## ■ Dimension and Notation

	<b>58D</b>	<b>0.3T</b>	<b>40H</b>	<b>2d</b>	<b>0.5W</b>	<b>16N</b>
	O.D.	Blade thickness	I.D.	Depth of slit	Width of slit	No. of slit
■ Production Range	O.D./D +0.1/-0	Blade thickness/T(mm) ±0.005 *1	I.D./H(mm) H6	Depth of slit/d (mm)	Width of slit/W (mm)	No. of slit/N
	50≤D≤100	0.05≤T≤0.4	40	By blade exposure	0.5	8,16,32

\*1 #270, 325 is ±0.01  
#200, 230 is ±0.015

Slit cut process is possible with blade thickness > 0.1T



## ■ Production Range

Mesh size	Grit	
	MD	XD
4000	●	
2500	●	
2000	●	●
1300	●	●
1200	●	●
1000	●	●
800	●	●
700	●	●
600	●	●
500	●	●
400	●	●
325	●	●
270	●	●
230	●	●
200	●	●

## ■ Production Range

Mesh size	Blade thickness (mm)				
	0.05<T ≤0.08 *2	0.08<T ≤0.1	0.1<T ≤0.15	0.15<T ≤0.25	0.25<T ≤0.4
4000	●	●	●	●	●
2500	●	●	●	●	●
2000	●	●	●	●	●
1300	●	●	●	●	●
1200	●	●	●	●	●
1000	●	●	●	●	●
800		●	●	●	●
700			●	●	●
600			●	●	●
500			●	●	●
400				●	●
325					●
270					●
230					●
200					●

## ■ Bond

HM013	Soft
HM020	
HM024	
HM030	Standard
HM050	
HM051	Hard
HM046	

\*2 Available with O.D. below 56D

## ■ Ordering the product

When ordering our product, please refer to our catalog and let us know the details of the product as below.

- 1) Shape and size/ Detailed blade shape and precision etc.
- 2) Specifications/ Desired specification as well as the current in-use blade etc.
- 3) Cutting work and condition/ Machine in use, RPM, feed speed, coolant flow rate etc.

## ■ Precautions

In order to use the product safely and to bring out the best of the blade's performance, please make sure to thoroughly read the specifications and other related materials of the product.

- \* The catalog is subject to change without notice.
- \* The catalog is not to guarantee the product quality.