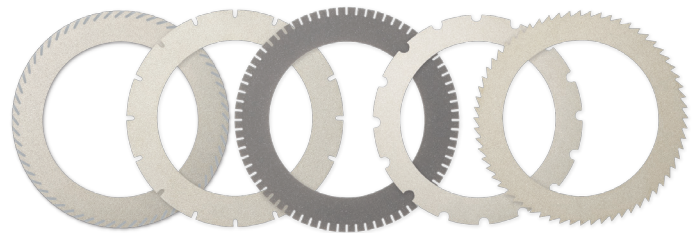


PRECISION ACCRETECH BLADE  
**NICKEL BOND BLADES**  
**DS type**

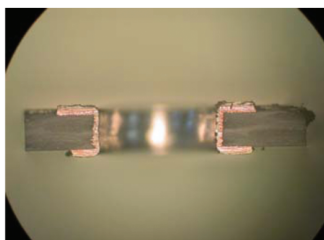


**Higher cutting ability, better cutting quality,  
and longer blade life.**  
**Its stability and performance contribute to the  
long-running series for over 20 years.**

- High accuracy and high-speed cutting.
- Excellence in blade rigidity and abrasion resistance.
- Sharp cutting ability, effective on burrs occurring.
- Three types with different characteristics are lined up.
- Expansion of the application by adding variations to the slit shape.

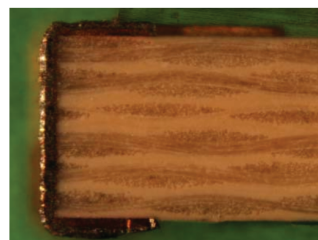


■ Dicing Application      Nickel blade (DS type)



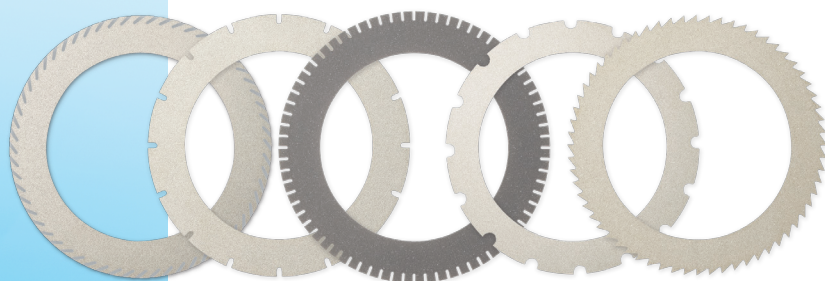
■ **Through hole cutting**  
UV-TAPE (PET TYPE)  
30,000 min<sup>-1</sup>  
150mm/sec

■ **High-quality and high-speed cutting enable removing of burrs from through holes completely.**



■ **Electrode cutting**  
UV-TAPE (PO TYPE)  
18,000 1/min<sup>-1</sup>  
50mm/sec

■ **Accumulated application technologies can meet any demand for burr reduction.**



### ■ Specification and Notation

<b>D</b>	<b>40/60</b>	-	<b>MDS</b>
Grit type	Grit size		Type

### ■ Concentration

H	High
M	Standard
S	Low

### ■ Slit

S	Standard type
SN	Slant type
SW	Sawing type

### ■ Lapping process

L	Lapping
---	---------

Lapping Process is possible with blade thickness more than 0.06T & blade O.D. lesser than 60D

### ■ Dimension and Notation

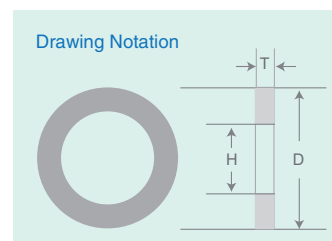
<b>56D</b>	<b>0.1T</b>	<b>40H</b>	<b>2d</b>	<b>1W</b>	<b>16N</b>
O.D.	Blade thickness	I.D.	Depth of slit	Width of slit	No. of slit

### ■ Production Range

O.D./D +0.1/-0	Blade thickness/T(mm) ±0.005 *1	I.D./H(mm) H6	Depth of slit/d (mm)	Width of slit/W (mm)	No. of slit/N
50≤D<53	0.025≤T≤0.4 *2	40	—	—	—
53≤D<58	0.04≤T≤0.4 *2		—	—	—
58≤D<62	0.05≤T≤0.4		—	—	—
62≤D<80	0.08≤T≤0.4	40≤H≤88.9	By blade exposure	0.5, 1, 2, 3	8, 16, 32, 64
80≤D≤100	0.1≤T≤0.4				

\*1 #325 is ±0.01.

\*2 0.025~0.05 is ±0.003



### ■ Production Range

Grit size (um)	Mesh size	Concentration		
		H	M	S
1/3	5500	●		
2/4	4000	●		
3/5	3500	●		
4/6	2500	●		● *3
4/8	2000	●	●	● *3
5/10	1300	●	●	●
6/12	1200	●	●	
8/16	1000	●	●	
8/20	800	●	●	●
12/25	700	●	●	●
20/30	600	●	●	●
30/40	500	●	●	● *4
40/60	400	●	●	● *4
	325	●	●	

### ■ Production Range

Grit size (um)	Mesh size	Blade thickness (mm)								
		0.025<T<0.03	0.03<T<0.04	0.04<T<0.05	0.05<T<0.06	0.06<T<0.08	0.08<T<0.1	0.1<T<0.12	0.12<T<0.2	0.2<T<0.4
1/3	5500	●	●	●	●	●	●	●	●	●
2/4	4000	●	●	●	●	●	●	●	●	●
3/5	3500	●	●	●	●	●	●	●	●	●
4/6	2500	●	●	●	●	●	●	●	●	●
4/8	2000	●	●	●	●	●	●	●	●	●
5/10	1300		●	●	●	●	●	●	●	●
6/12	1200			●	●	●	●	●	●	●
8/16	1000				●	●	●	●	●	●
8/20	800					●	●	●	●	●
12/25	700					●	●	●	●	●
20/30	600						●	●	●	●
30/40	500							●	●	●
40/60	400								●	●
	325									●

\*3 4/6S & 4/8S will available with thickness below 0.04T~0.1T

(for lap type thickness will be below 0.08T~0.15T)

and diameter will be lesser than 59D (For Lap type lesser than 0.1T will be below 56D in OD).

\*4 Available range is 0.2≤T≤0.25 for 30/40S and 40/60S

### ■ Ordering the product

When ordering our product, please refer to our catalog and let us know the details of the product as below.

- 1) Shape and size/ Detailed blade shape and precision etc.
- 2) Specifications/ Desired specification as well as the current in-use blade etc.
- 3) Cutting work and condition/ Machine in use, RPM, feed speed, coolant flow rate etc.

### ■ Precautions

In order to use the product safely and to bring out the best of the blade's performance, please make sure to thoroughly read the specifications and other related materials of the product.

\* The catalog is subject to change without notice.

\* The catalog is not to guarantee the product quality.

**TOKYO SEIMITSU CO., LTD.**