

PRECISION ACCRETECH BLADE
RESIN BOND BLADES
FOR LEAD FRAME PACKAGES
PG series



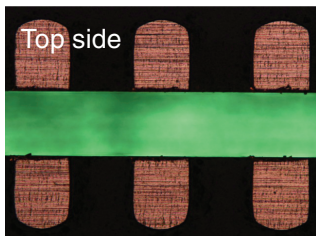
Resin blade series for lead frame package cuttings.
Realizes high cutting quality and long life.

- Resin blade series for lead frame package cuttings such as QFN and DFN.
- A variation is expanded in pursuit of the high-speed cutting, long life, and stable cutting quality.

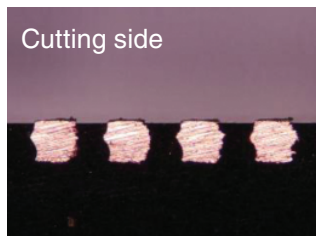


■ Dicing Application

<Normal type QFN >



Cutting side

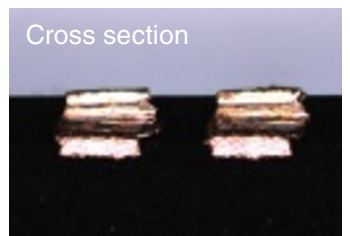


■ Even under severe cutting conditions, burrs are suppressed and high-quality dicing is possible.

<Wettable type QFN >



Cross section



■ A good wettable shape that suppresses burrs and smearing.



■ Specification and Notation

1A8

Shape

SDC

Grit type

230

Mesh size

-

75

Concentration

PG101

Bond

■ Grit type

SDC	Coating
-----	---------

■ Availability by mesh size

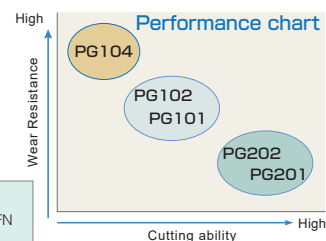
Mesh size
#600
#500
#400
#325
#270
#230
#200
#170

■ Concentration

Blade thickness	Concentration
$T < 0.28$	50,75
$T \geq 0.28$	75,100

■ Bond

PG101	Long life type	For Sn QFN
PG201	High quality type	
PG102	Long life type	For Wettable type or PPF type QFN
PG202	High quality type	
PG104	Long life type	For general QFN



■ Dimension and Notation

58D

O.D.

0.2T

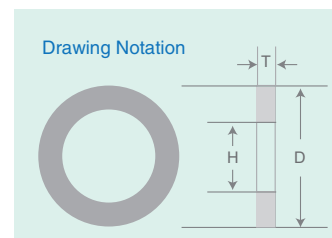
Blade thickness

40H

I.D.

■ Production Range

O.D. (mm)		Blade thickness (mm)		I.D. (mm)
Availability size	Tolerance	Availability size	Tolerance	Availability size
50~62	+0.1 -0	$0.17 \leq T \leq 0.35$	± 0.01	40
		$0.35 < T \leq 0.4$	± 0.02	



■ Production Range

Mesh size	Blade thickness (mm)				
	$0.17 \leq T \leq 0.2$	$0.2 < T \leq 0.25$	$0.25 < T \leq 0.3$	$0.3 < T \leq 0.35$	$0.35 < T \leq 0.4$
#600	●	●			
#500	●	●			
#400	●	●			
#325	●	●	●		
#270		●	●	●	
#230			●	●	
#200				●	●
#170				●	●

Consult us for the specification other than described in this catalogue.

■ Ordering the product

When ordering our product, please refer to our catalog and let us know the details of the product as below.

- 1) Shape and size/ Detailed blade shape and precision etc.
- 2) Specifications/ Desired specification as well as the current in-use blade etc.
- 3) Cutting work and condition/ Machine in use, RPM, feed speed, coolant flow rate etc.

■ Precautions

In order to use the product safely and to bring out the best of the blade's performance, please make sure to thoroughly read the specifications and other related materials of the product.

- * The catalog is subject to change without notice.
- * The catalog is not to guarantee the product quality.

TOKYO SEIMITSU CO., LTD.

2968-2, Ishikawa-machi, Hachioji-city, Tokyo 192-0032, Japan TEL.+81(42)631-5211 FAX.+81(42)631-5234 <https://www.accretech.com>