

SEMI-AUTOMATIC DICING MACHINE

SS30 PLUS

*"High rigidity and High torque spindle as standard
Accommodates to the dicing of a variety of materials from
wide substrate to hard-to-cut-materials such as a glass,
ceramics."*

Footprint

Small footprint with
highly stable structure

Compliant with varieties of work

- □ 250 mm, 300 x 250 mm
- Alignment with multiple
works attachment
- Deformed and elastic
work alignment

High-resolution microscope

Improved resolution

High torque spindle as standard

High rated torque 0.8 Nm

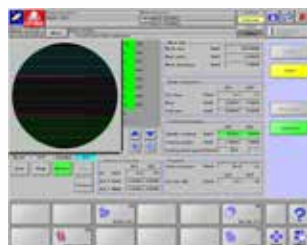
User Friendly

Improved operability with the
17-inch touch panel screen



Main Features

- 1 Accommodates various types of workpieces as standard option:
1: 12-inch frame
2: □250 mm, 300 x 250 mm
- 2 High torque spindle as standard
- 3 Enhanced throughput
- 4 17" LCD touch panel and new GUI
(Graphical User Interface)
with simple layout and
large touch-buttons allow users'
interactive operation
- 5 Easy and simple
Kerf check function
(AI kerf check function)
- 6 Stores over 10,000 recipes
- 7 USB port as standard option
(USB memory device can be used as external memory)
- 8 Ease-of-maintenance
Wide maintenance door and front-side accessibility allows easy routine
maintenance
- 9 Optimized vacuum controller
reduces 50% of air consumption compared with existing model



▲ New GUI

Specifications

| | | |
|------------------|--------------------------------------|--|
| Max. work size | | Φ 12 inch □ 250 mm, 300 x 250 mm |
| Equipped Spindle | Rotation | 3,000 to 30,000 min ⁻¹ (In case of 3 inch blade) |
| | Blade diameter | Φ 3 to 4 inch (Φ 76 to 110 mm) or Φ 4 to 5 inch (Φ 90 to 130 mm) |
| | Rated Output | 2.5 kW |
| X axis | Available cutting range | 310 mm |
| | Max. Speed | 800 mm/sec |
| Y axis | Available cutting range | 310 mm |
| | Max. Speed | 300 mm/sec |
| Z axis | Positioning Accuracy | 0.002 mm / 310 mm |
| | Stroke | 35 mm |
| | Max. Speed | 80 mm/sec |
| | Repeatability | 0.001 mm |
| θ axis | Range of rotation | 380° |
| Misc | Voltage | 3 Phase AC200 to 220V ±10 % |
| | Power consumption | 4.0 kVA(MAX) |
| | Air pressure | 0.55 to 0.7 MPa |
| | Avg. Air consumption | 220 L/min |
| | Cutting Water, and others (pressure) | 0.3 to 0.5 MPa |
| | Cutting Water, and others (Flow) | 4.0 L/min |
| | Cooling Water (pressure) | 0.3 to 0.5 MPa |
| | Cooling Water (Max Flow) | 2.9 L/min |
| Size (W*D*H) | | 890 mm×1,000 mm×1,560 mm |
| Weight | | 840 kg |

Maintenance

Large access area is secured.

